



Kalyani Charitable Trust's
K. R. Sapkal College of Management Studies
Kalyani Hills, Anjaneri, Trimbakeshwar Road,
Nashik – 422 213



7.1.2 The Institution has facilities for alternate sources of energy and energy conservation measures Solar energy Biogas plant Wheeling to the Grid Sensor- based energy conservation Use of LED bulbs/ power efficient equipment.

1. Alternate sources of energy and energy conservation measures
2. Management of the various types of degradable and non-degradable waste
3. Water conservation
4. Green campus initiatives
5. Disabled-friendly, barrier free environment

Index

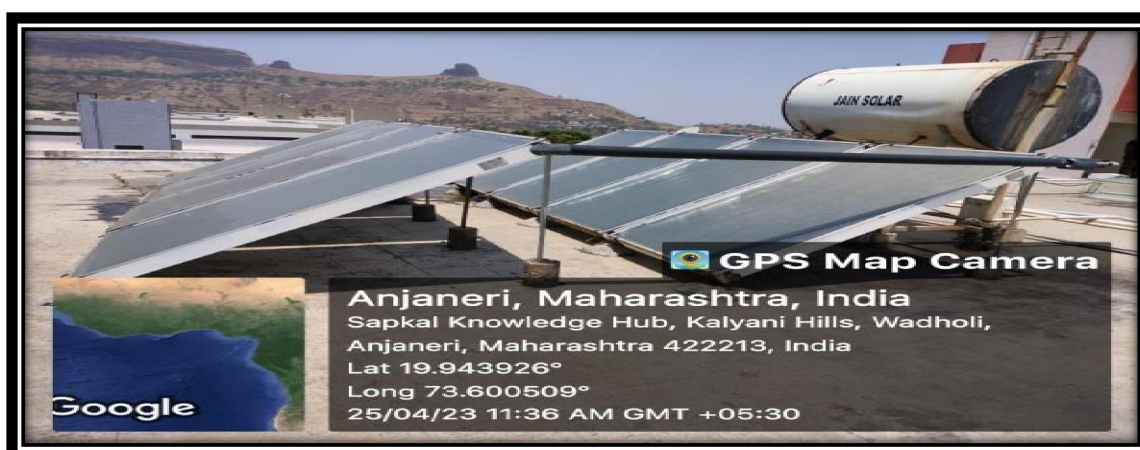
| Sr. No. | Facilities and Initiatives |
|---------|------------------------------|
| 1 | Alternate sources of energy |
| 2 | Waste management |
| 3 | Water conservation |
| 4 | Green campus initiatives |
| 5 | Disable-friendly environment |

1. Alternate sources of energy and energy conservation measures

1.1 Solar Hybrid Water Heating System

Solar power is the conversion of renewable energy from sunlight into electricity, either directly using photovoltaic, indirectly using concentrated solar power, or a combination. Solar water heater is the most competitive alternative to conventional water heating methods such as electric geysers and fuel-fed boilers. Solar water heater save's electricity, helps in preservation of the environment as it is a non-polluting source of energy, involves zero running cost safe as electricity or gas is not required.

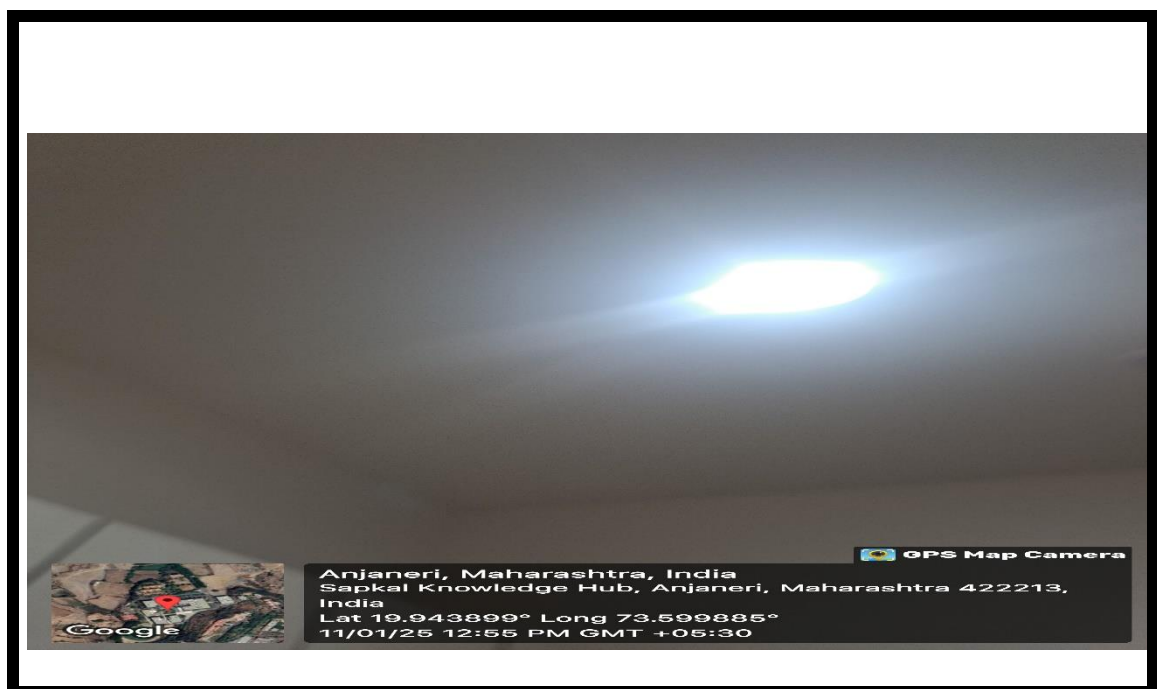
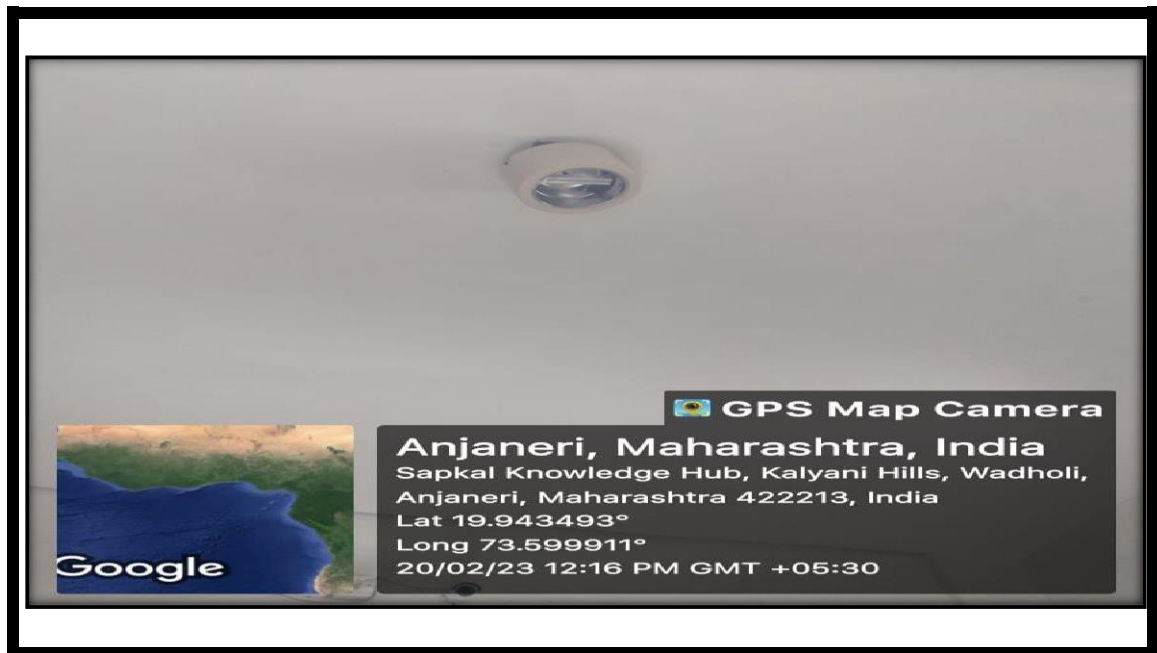
In LGNSCOE campus premises solar water heating facilities with solar panels were installed on the roof tops of boys and girls' hostel which helps to reduce electrical power to heat the water. Solar panel cleaning by chemical replacement carried out properly.



Solar water heater

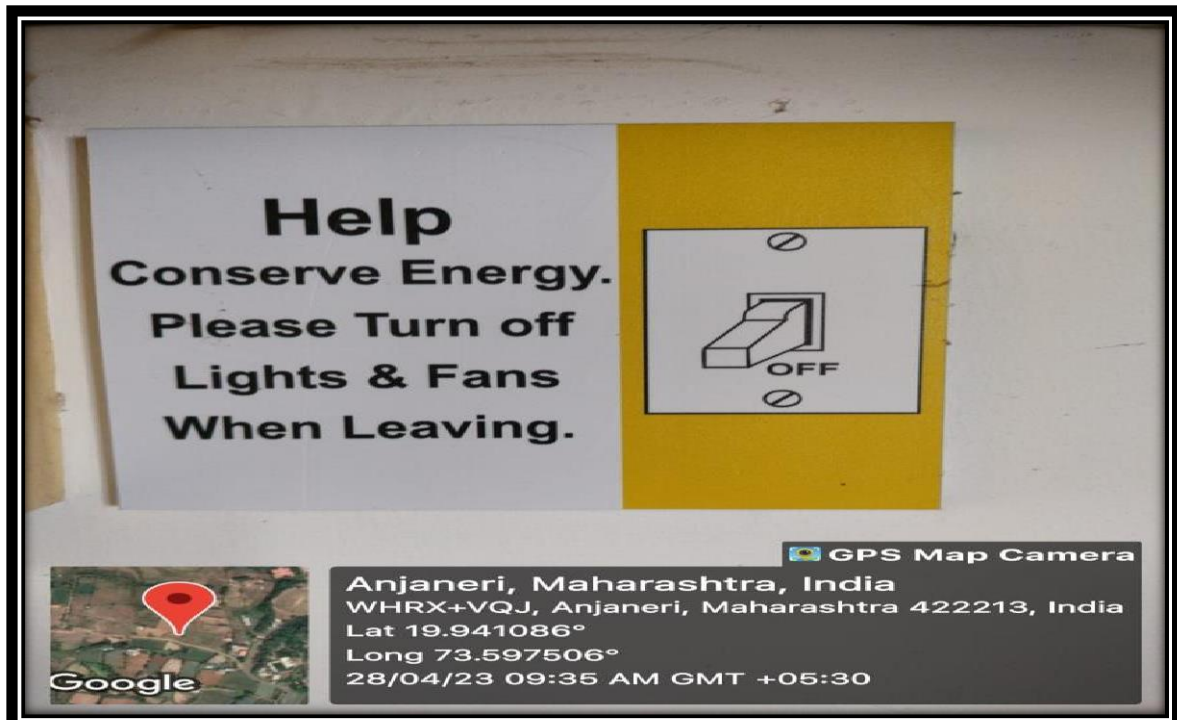
1.2 Use of Light Emitting Diode (LED)

The institute has provided LED bulbs, tubes and power efficient equipment for conserving energy. Master switches provided in departments for each room to shut down power of entire room when it is not in use.



LED Bulbs in Building

1.3 Display Boards of Energy conservation



2. Management of the various types of degradable and nondegradable waste

2.1 Solid waste management

The solid waste before disposal is categorized into degradable and non-degradable waste. The waste like remains of plants and kitchen waste are disposed by means of composting. Non-degradable waste like, plastic wrappers, sheets, etc., are collected at source by placing trash bins at suitable locations. This plastic waste is then disposed safely through a plastic recycling agency.



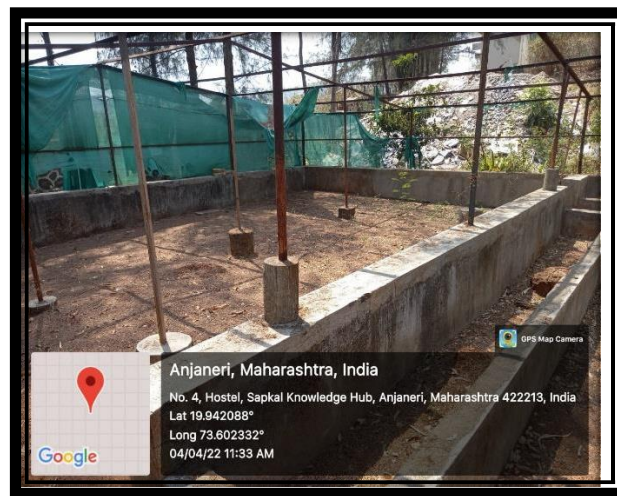
Solid Waste Management by composting method



Dustbins for collection of non-degradable waste

2.2 Liquid waste management

Although being situated in the hilly terrain with no support from the local government authorities, the institute disposes its liquid waste into the environment safely. A septic tank has been built to separate solid waste. The liquid waste is then discharged into a leach field where the dissolved solids are absorbed by soil and clear water then moves by gravity deep into the earth to rejuvenate the ground water level.



Liquid Waste Management

3. Water conservation

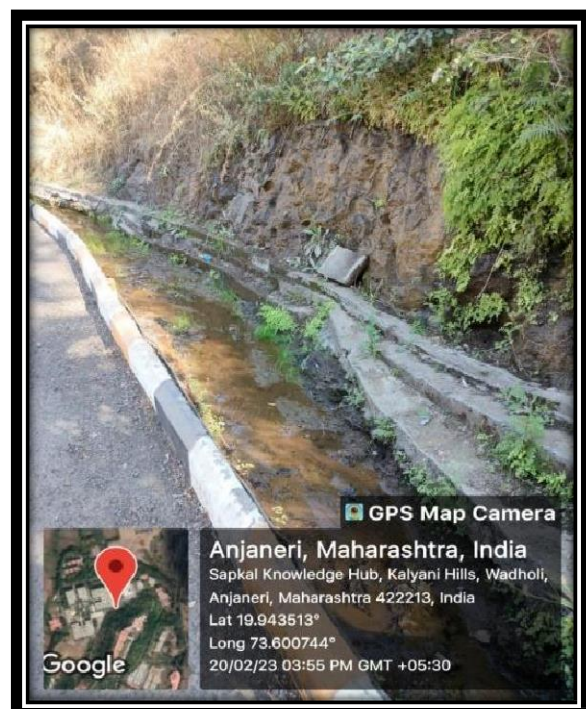
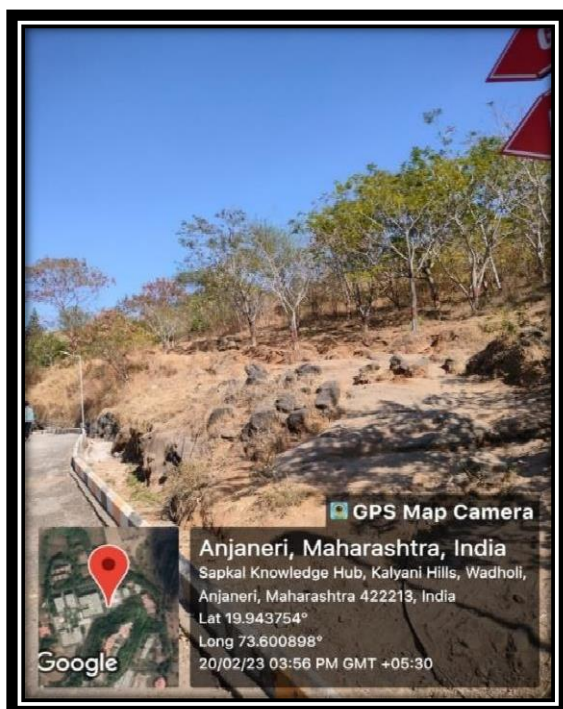
Water the natural resource and the main constituent of our planet earth. Conservation of water mainly refers to protect, preserve, and control the usage of water and its resources. It is the system introduced to manage freshwater, reduce the wastage and protect the water and its resources in order to reduce and to avoid the scarcity. Therefore, we all should come forward to create awareness about conservation of water among our own friends, family, neighbors, society, etc. Conservation of water is very much essential as it saves life on earth. Following conservation of water measures through bund, tanks and reservoirs are initiated by KRSCMS campus:

3.1 Rain water harvesting

Reservoir with Harvested rainwater



3.2. Construction of tanks and bunds





3.3. Overhead Tanks & Distribution System of Water in Campus

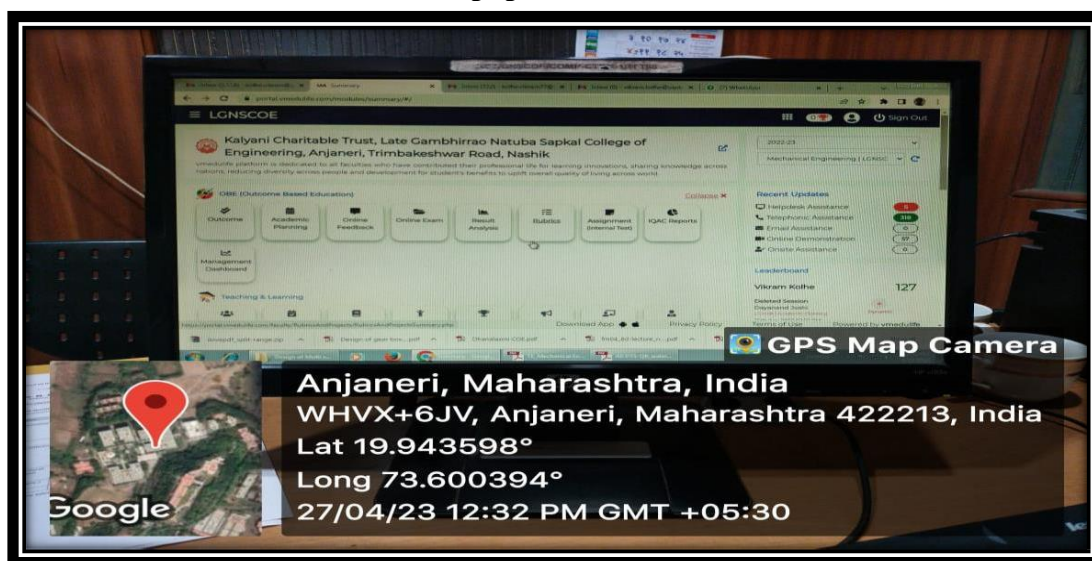


4. Green campus initiatives

The institute initiates environment and eco-friendly practices and education to promote sustainability in the campus. Green campus initiatives prefer to use nonconventional and renewable resources. The green campus initiative also includes proper handling, disposal of waste, harvesting and saving water, purchasing of environment friendly, power saving equipment's. Institute use ERP software to avoid paper use.

It needs strategies and planning to implement green campus initiatives at the institute. The institute is implementing different activities among students and promoting awareness about a social responsibility of conservation of natural resources and accelerating the sustainability and environmental protection by tangible initiatives for green campus at KRSCMS.

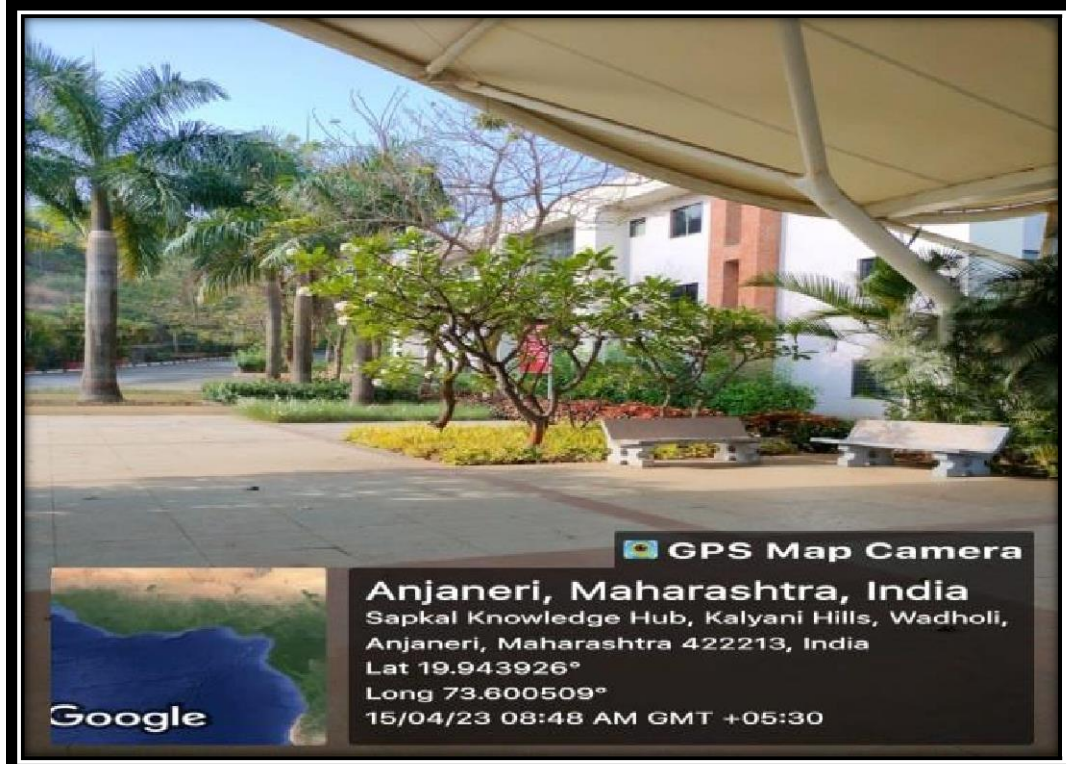
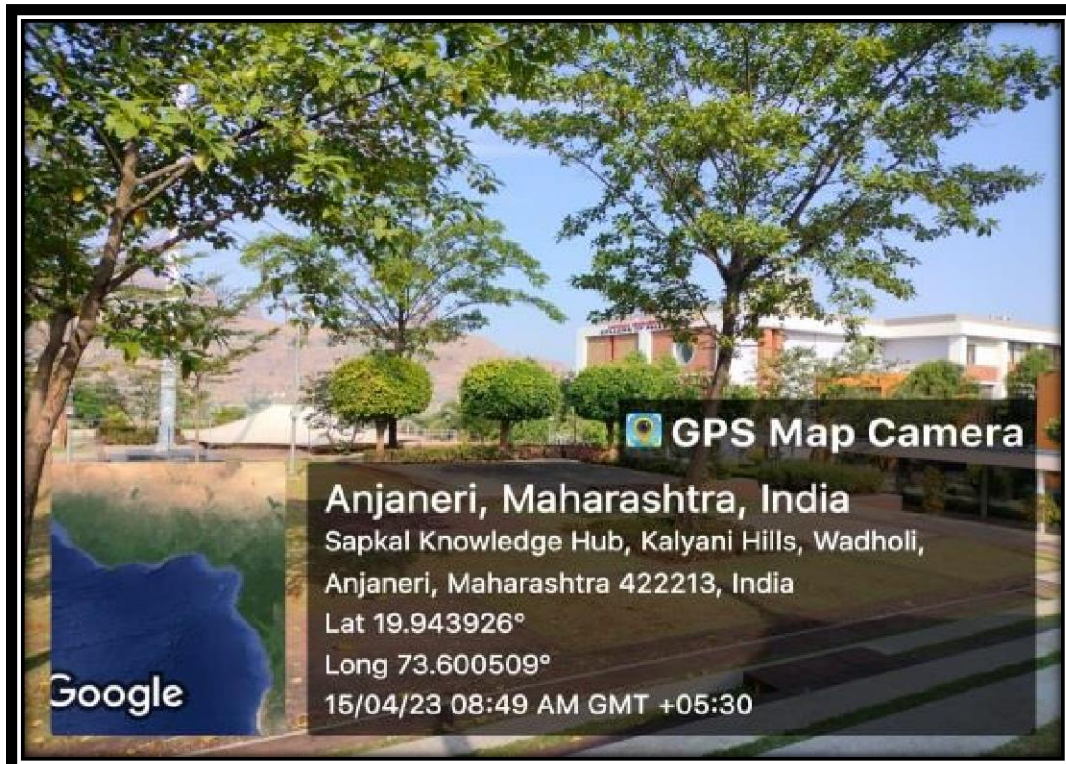
4.1 Use of ERP Software to reduce paper work.



4.2 Plantation and landscaping in KRSCMS Campus.

The campus has significant greenery covering all over and is maintained by a team of around 50 gardeners. All these efforts have been honored by the Government of Maharashtra with 'Chatrapati Shivaji Maharaj Vanashree Award.'



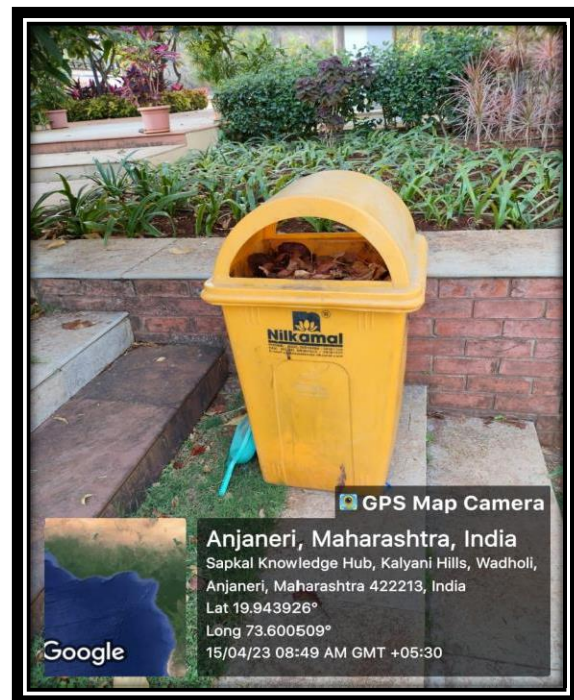


Trees in the Campus

Chatrapati Shivaji Maharaj Vanashree Award



4.3 Segregation of Solid Waste

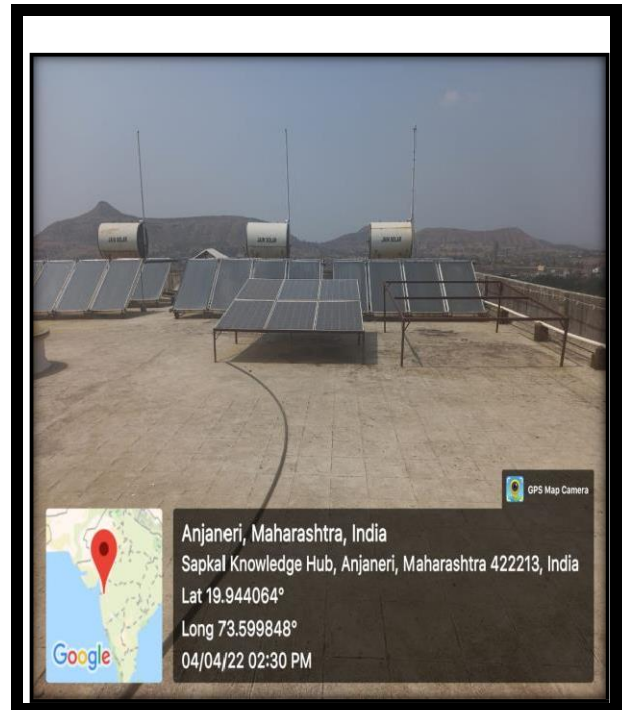


Dustbins for collection of Solid waste



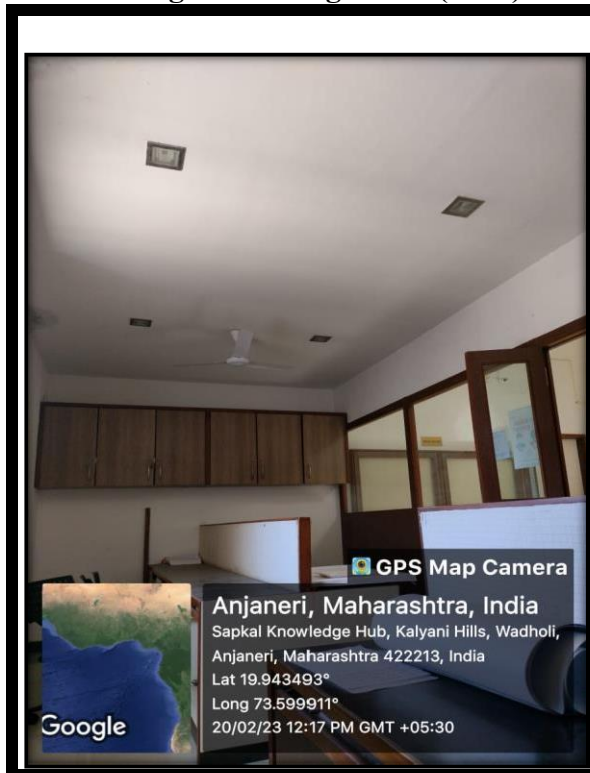
Segregated food waste in canteen

4.5. Utilization of solar power



Solar Water Heater in the campus

4.6. Use of Light Emitting Diode (LED)



LED bulbs

4.7 Transport facility

The institute has more than 25 buses & 5 passenger vehicles for transportation. The students are charged reasonably and staff members are provided free transport facility to discourage them from using their own vehicles. Institute reduces use of private vehicles by providing transportation facility.



Bus Facility

4.8 Use of bicycles/ Battery-powered vehicles

Bicycles: The institute has provided free bicycles in the campus for the residential students and staff.



Use of Bicycles in the campus



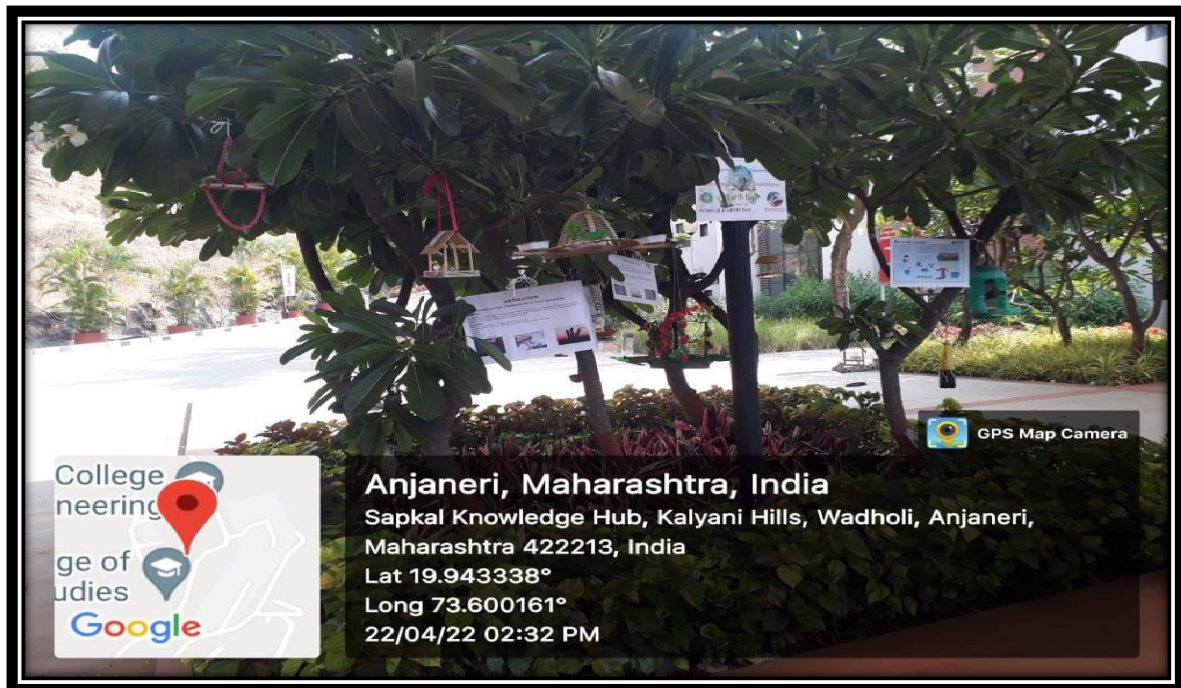
Bicycle

4.9 Tree plantation in the campus



Tree plantation

4.10 Promote to Use of eco-friendly material from various activities.



Bird feeder made by students from eco-friendly material



Bird feeder made by students from eco-friendly material

4.11 Plastic free campus and Alternate Measures to minimize Use of Plastic

Ban on use of plastic: Instructions are displayed at various locations so that the campus remains plastic free. The institute has also designed their own paper and cotton bags and motivates the faculty and students to use them instead of plastic ones. Alternative measures of use of glassware instead of plastic in cafeteria and use of paper files instead of plastic files.



❖ Ban on Use of Plastic- Alternate Measures



Usage of Cotton Bags instead of plastic bags

❖ Ban on Use of Plastic- Alternate Measures



Usage of glassware instead of plastic in cafeteria

5. Disabled – friendly, barrier free environment

Our institute is taking an effort to enhance the healthy, disabled-friendly, and barrier free built environment of KRSCMS.

The focus of our institute is on policies like:

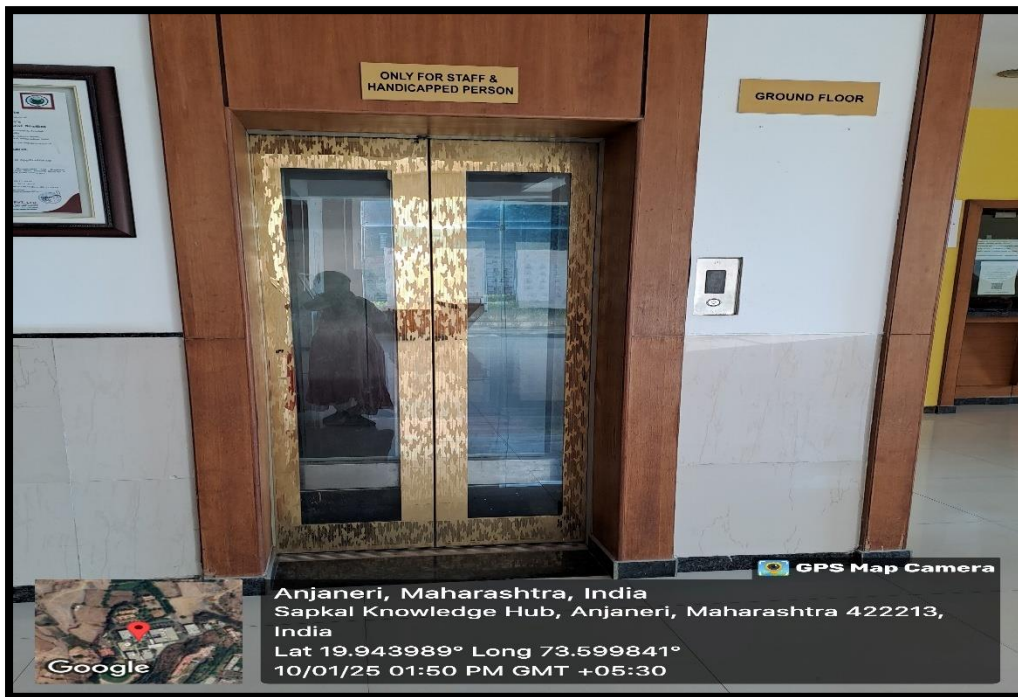
- Provision of guiding desks for enquiry and information by human assistance, reader, scribe.
- The design of campus with provision of facilities like ramp for disabled students.
- Setting up the proper text and pictogram signage such fire exit, lights, notice boards and sign posts.
- The use of signage of male and female symbols, in accordance with standard specifications.
- The college ensures provision of accessible, gender-sensitive, safe, usable and functional washroom facilities for disabled students (Divyangjan)
- Lift for Disabled.
- employees and students as per their requirement.
- Scribes and additional time at the time of examination as per norms.

5.1 Signage including tactile path, lights, display boards and signposts



Signboards in the campus

5.2 Lift for Disabled Person



Lifts for disabled Person

5.3 Wheel Chairs



Wheelchair for disabled persons

5.4 Disabled Friendly Washroom



Washroom for disabled persons

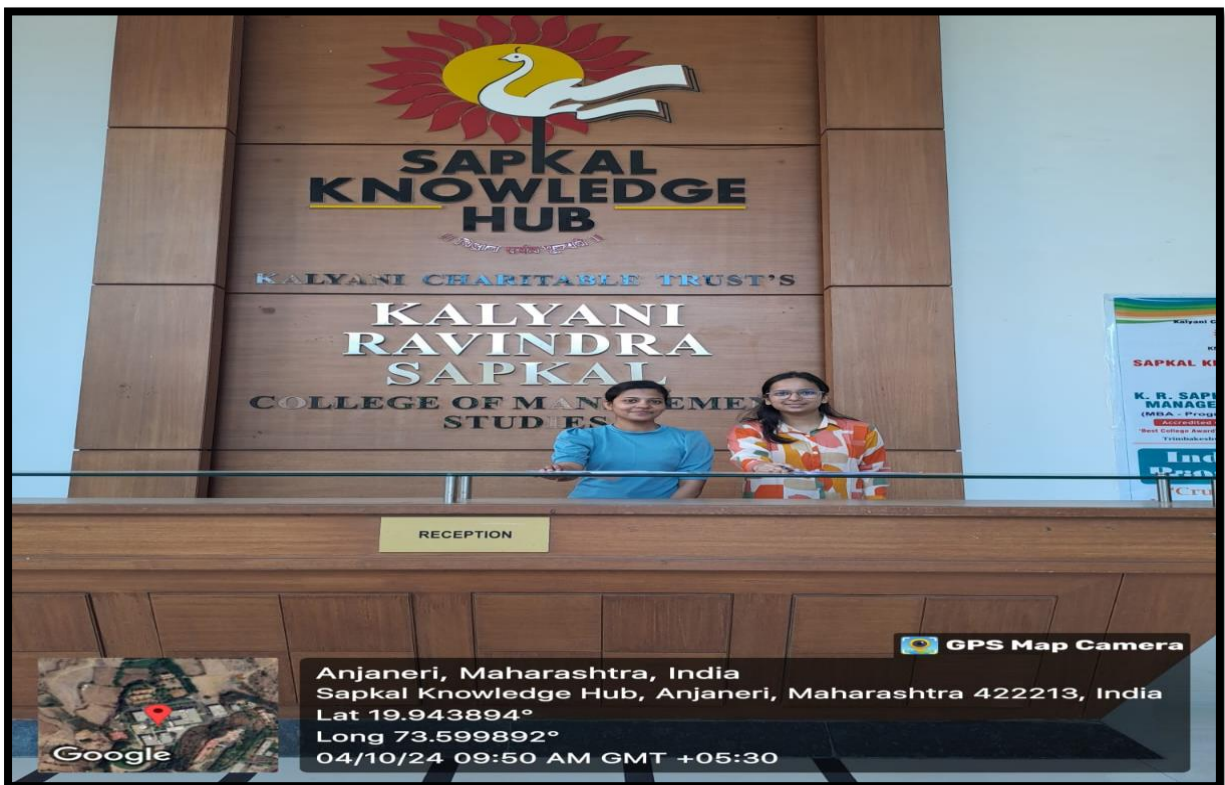
5.5 Pedestrian-friendly pathways

Pedestrian friendly pathways: The internal roads in the campus are wide and clean, flanked with flower beds and have negligible vehicular movement.





5.6 Enquiry Desk



Reception